

HATE CRIME

Over the coming month, Merseyside Police Safer Schools Officers and school staff will be delivering assemblies and classroom sessions focusing on Hate Crime. This initiative aims to help pupils understand what hate crime is, how it affects individuals and communities, and what they can do if they experience or witness it.



Topics covered in session

- Understanding what constitutes a hate crime
- Protected characteristics and their importance
- Online hate crime – recognising abusive or threatening behaviour on social media, gaming platforms, or messaging apps, and understanding its consequences
- What to do if targeted online
- How to report hate crime

IF YOUR CHILD EXPERIENCES ONLINE HATE

- Block the person or people responsible on all platforms
- Keep evidence – take screenshots, save messages, and note dates/times
- Report the abuse to the social media or online platform where it occurred
- Tell a trusted adult such as a parent, teacher, or youth worker
- Report to police if the behaviour is threatening, abusive, or otherwise criminal



What is a Hate Crime?

A hate crime is any criminal offence motivated by hostility or prejudice towards a person's:

- Race or ethnicity
- Religion or belief
- Sexual orientation
- Disability
- Gender identity

These are known as protected characteristics under UK law

Examples of Hate Crime

Hate crimes can happen in person or online and can include:

- Verbal or physical abuse
- Intimidation and threats
- Criminal damage
- Harassment
- Incitement to hate

Example: If someone is verbally abused in the street because of their religion, or receives threatening messages online because of their disability, this would be classed as a hate crime.

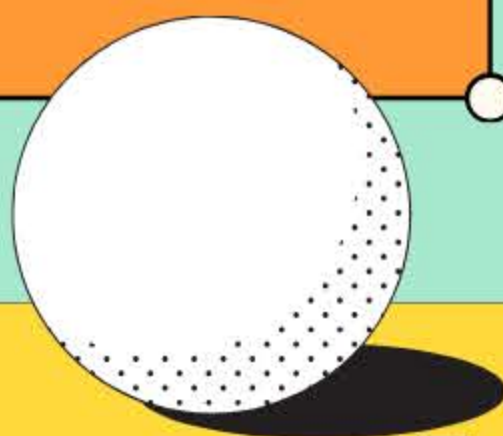
VICTIM SUPPORT SERVICES

If you, your child, or someone you know experiences hate crime, there are local organisations that can offer specialist help:

- **Anthony Walker Foundation** – Support for victims of race and faith-based hate crime (www.anthonwalkerfoundation.com)
- **Citizens Advice Liverpool** – Support for LGBT+ communities (www.citizensadvice.liverpool.org.uk)
- **Daisy UK** – Support for people with disabilities (www.daisyuk.com)
- **Victim Care Merseyside** – General victim support services (www.victimcaremerseyside.org)

HATE CRIME

Over the coming month, Merseyside Police Safer Schools Officers and school staff will be delivering assemblies and classroom sessions focusing on Hate Crime. This initiative aims to help pupils understand what hate crime is, how it affects individuals and communities, and what they can do if they experience or witness it.



REPORTING OPTIONS

- **Merseyside Police** – Call 101 (or 999 in an emergency)
- **Fearless** – <https://crimestoppers-uk.org/fearless/what-is-fearless>
- **Stop Hate UK** – <https://www.stophateuk.org/>
- **Report Remove** – <https://www.childline.org.uk/info-advice/bullying-abuse-safety/online-mobile-safety/report-remove/>
- **CEOP** – <https://www.ceop.police.uk/Safety-Centre/>

HOW YOU CAN SUPPORT YOUR CHILD

- Talk with your child about what they have learned in these sessions
- Reassure them that it is always right to report hate crime, whether they are a victim or a witness
- Remind them that online abuse is just as serious as face-to-face abuse

QUESTIONS?

If you have any questions about the sessions or would like further information on hate crime, please contact your designated safeguarding lead within your school, who may be able to assist, or speak to your Safer Schools Officer on your behalf.